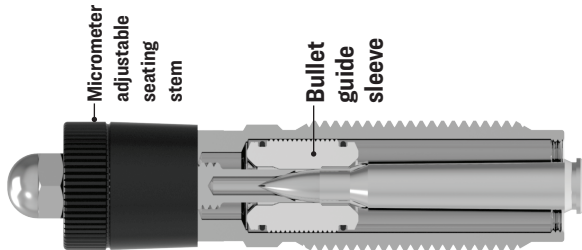


## Precision Bullet Seating Die



**WARNING:** This product can expose you to chemicals including lead, which is known to the state of California to cause cancer and birth defects or other reproductive harm. For more information, go to [www.P65Warnings.ca.gov](http://www.P65Warnings.ca.gov).

# LEE

Precision Bullet Seating Die

LEE PRECISION, INC.  
4275 COUNTY ROAD U · HARTFORD WI 53027  
[www.leeprecision.com](http://www.leeprecision.com)

The Lee Precision bullet seater features dead length seating, a floating bullet guide sleeve and a micrometer adjustable seating stem.

### INSTRUCTIONS:

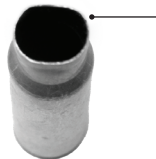
- 1 Install the die body into the press screwing in until firm contact is made with the shell holder plus an  $\frac{1}{8}$  of a turn.
- 2 Adjust the micrometer adjust screw to the “.1” position. Place a bullet on the case mouth and raise ram to top of stroke. Lower ram and check over all length (OAL). Adjust micrometer to obtain desired OAL, remembering each line on thimble represents .001”.
- 3 Record micrometer setting for future use.

See **Setting up the crimp feature** for setting die to crimp. →

**4 Setting up the crimp feature.** The die can apply a crimp while seating. Seating while crimping is for advanced users. You must have brass trimmed to uniform length, the bullets must have a crimp groove and the bullet must be seated exactly in the crimp groove. Attempting to apply too much crimp will damage the brass. The dead length feature of the die is no longer available when crimping and seating, expect more variation in overall length.



**5 Reconfigure the die to crimp.** Unscrew the bullet guide sleeve counterclockwise. Use a case that has the neck squeezed out of round with pliers as your tool to unscrew. Flip the sleeve to the opposite end with identifying groove facing down, and thread clockwise completely into die.



**case neck  
squeezed out of  
round**

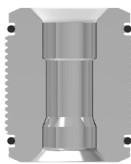
**6 Identifying groove indicates which side crimps.**

Bullet  
guide  
sleeve



Identifying groove =  
seat & crimp

Seat only



Bullet guide  
sleeve  
inside view

Crimp ↓

**7** Place a sized and trimmed brass in shell holder and raise ram. Screw die into press until you feel it contact the case mouth, and lightly tighten the lock ring. Now seat the bullet. Adjust the seating depth so that the bullets crimp groove width is halfway into the case mouth. Carefully loosen the lock ring, and turn the entire die body  $\frac{1}{3}$  turn into the press. Raise the press ram, the bullet will seat approximately .02" deeper and a crimp will be applied.

**LEE**

LEE PRECISION, INC.  
4275 COUNTY ROAD U · HARTFORD WI 53027  
[www.leeprecision.com](http://www.leeprecision.com)